



AQUALINE  
WATERPARKS & TECHNOLOGY



# AQUALINE WATERPARKS & TECHNOLOGY

## Briefly on Aqualine Waterparks & Technology

Aqualine is redefining water play with a fresh approach, offering an extensive range of innovative and engaging attractions. With over 20 years of industry experience, we have taken a bold step into production, combining our expertise with advanced manufacturing capabilities to deliver world-class water attractions. With enthusiasm and dedication, we are transforming our industry knowledge into manufacturing, delivering high-quality, customized water play solutions to parks worldwide.

Our mission is to create unforgettable aquatic experiences that spark joy, creativity, and adventure. At Aqualine, we are dedicated to designing and delivering high-quality, safe, and durable attractions that captivate children of all ages. By integrating advanced technology with imaginative play elements, we ensure that every water park we help create becomes a vibrant hub of excitement, laughter, and unforgettable memories.

With an unwavering commitment to excellence and innovation, Aqualine continues to push the boundaries of aquatic entertainment, shaping the future of water play—project by project.

## Innovators in Aquatic Entertainment

At Aqualine, we take immense pride in our team of highly skilled and visionary specialists, whose years of industry experience now drive our journey into manufacturing, allowing us to create unique and high-quality water attractions. With a deep understanding of design, engineering, and industry trends, our experts transform creative concepts into exceptional, immersive experiences that captivate visitors of all ages.

We are committed to continuous improvement and innovation, refining our skills and expanding our expertise through rigorous annual training programs in world-class manufacturing facilities. By leveraging our industry expertise and embracing the latest advancements, we ensure every attraction we create meets the highest standards for quality, safety, and innovation.

Whether you're envisioning a large-scale water park or a custom-designed aquatic attraction, our team-backed by decades of experience-offers tailor-made solutions directly from our production facilities, ensuring quality, flexibility, and innovation.

## Inspiring Play, Igniting Imagination

Research shows that children learn best when they are free to explore, play, and engage with their surroundings in a fun, stimulating environment. At Aqualine, we create immersive water play experiences designed to spark curiosity, encourage active movement, and provide endless entertainment-all while ensuring the highest safety standards.

Our exciting collection of kids' slides, interactive play structures, and water attractions captivates young minds and provides hours of joy. With scaled-down versions of our iconic slides, vibrant themes, and a diverse range of play elements, we offer something for every age group. Whether it's standalone slides, tipping buckets, net climbs, or water cannons, our play structures are designed to be the ultimate hub of fun.

We understand that every project is unique, so our modular designs allow for complete customization in size, color, and theme. Simply choose your favorite elements and create a water play zone that perfectly suits your vision!

### Key Features

- Maximum Safety - Designed with international safety standards in mind
- Sleek & Modern Design - A contemporary aesthetic that integrates seamlessly into any park
- Customizable Themes - Wide variety of themes to match your unique vision
- Interactive Play Elements - Engaging features to keep children entertained for hours
- Modular & Scalable - Flexible designs to fit spaces of any size
- Extensive Slide Options - A broad selection of water slides tailored for kids
- Innovative & Up-to-Date - Designed with the latest industry advancements

At Aqualine, we bring imagination to life with exceptional water play solutions, making every splash, laugh, and moment of excitement unforgettable!



# Contents

## WATERSLIDES



DUBAI 12



RIO DE JANERIO 13



COLORADO 14



TOKYO 15



SHANGHAI 16



MOSCOW 17



ROME 18



SAN FRANCISCO 19



ISTANBUL 20



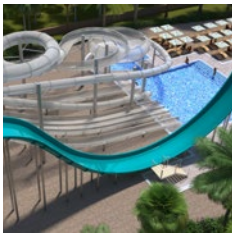
PARIS 21



NEW YORK 22



BARCELONA 23



MUMBAI 24



LOS ANGELES 25



CAPE TOWN 26



SYDNEY 27



BERLIN 28

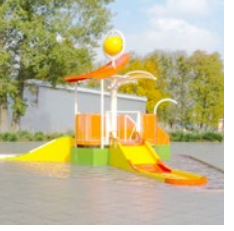
## AQUATIC PLAY STRUCTURES



MiniAPS 101 32



MiniAPS 102 33



MiniAPS B102 34



MiniAPS 202 35



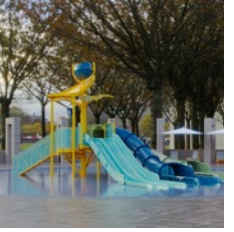
MiniAPS B202a 36



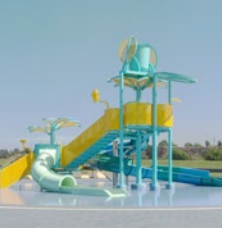
MiniAPS B303 37



MiniAPS B403 38



APS 13 39



APS 22 40



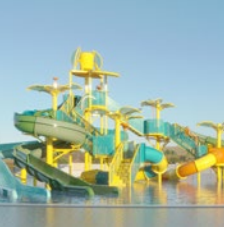
APS 23 41



APS 24 42



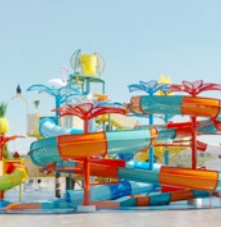
APS 34 43



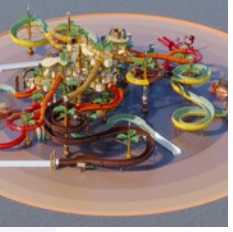
APS 55 44



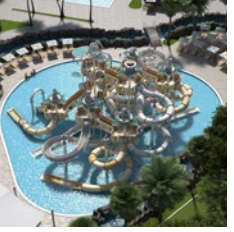
APS 87 45



APS 55 PARADISE 47



APS 68 LOST ISLAND 48



APS 87 ANCIENT GREEK 49



APS 23 AIRPORT 50



APS 12 NEOTEXTURE 51



## KIDS ANIMATIONS



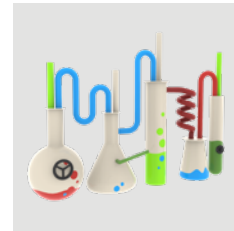
SHIP SLIDE 54



AIRPLANE SLIDE 54



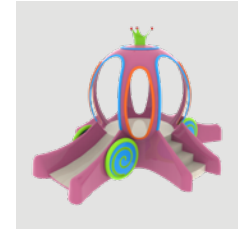
TRAIN SLIDE 54



LABORATORY  
PLAYSET 55



SUBMARINE  
PLAY CABIN 55



CINDERELLA SLIDE 55



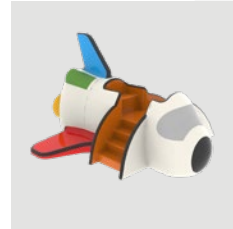
FAIRY TALE  
HOUSE SLIDE 56



SPACE POD SLIDE 56



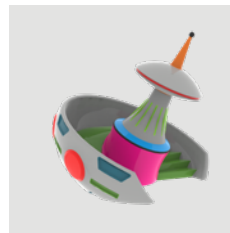
TOWER SLIDE 56



SPACE SHUTTLE  
SLIDE 57



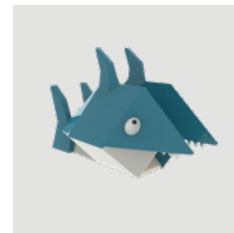
ROCKET SLIDE 57



SPACE STATION  
SLIDE 57



CRAB PLAY  
PLATFORM 58



SHARK SLIDE 58



JELLYFISH  
WATERFALL 58



SEAL SHOWER 59



CAR 59



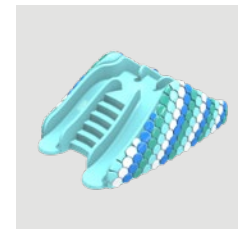
TINY SLIDE 60



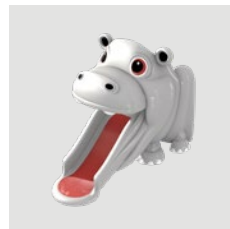
HUGE SLIDE 60



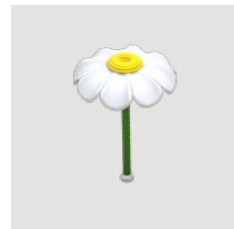
CURL SLIDE 61



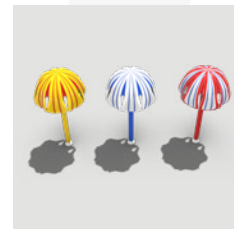
QUAD SLIDE 61



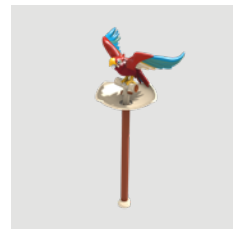
HIPPO SLIDE 62



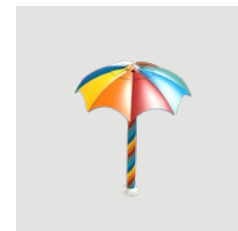
DAISY FOUNTAIN 62



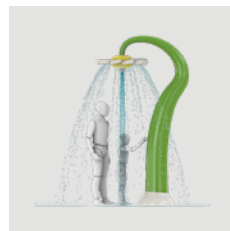
JELLYFISH  
FOUNTAIN 63



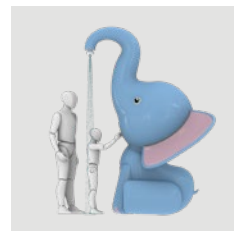
PARROT  
FOUNTAIN 63



UMBRELLA  
FOUNTAIN 64



DAISY SHOWER 64



ELEPHANT  
SHOWER 65

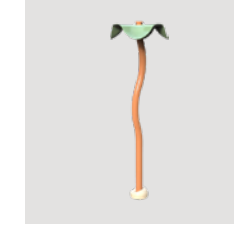
## SYRAY ELEMENTS



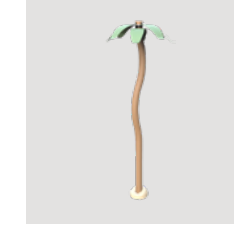
BUCKY 68



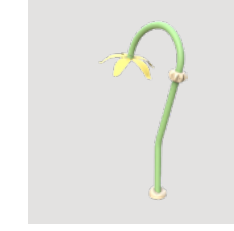
MUSHROOM 68



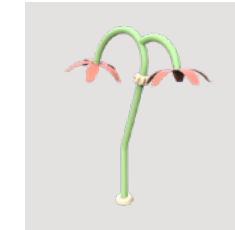
WEIRDO 68



WAVIE 68



HANGOVER-01 69



HANGOVER-02 69



WORM HOLE 69



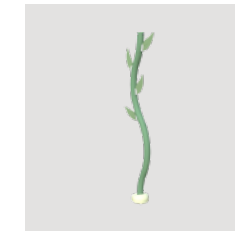
PALMIE-01 69



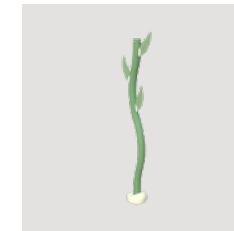
PALMIE-02 70



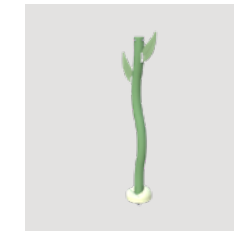
PALMIE-03 70



WEEDIE-01 70



WEEDIE-02 70



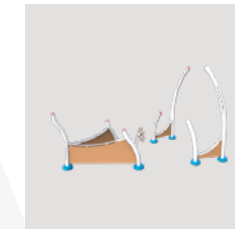
WEEDIE-03 71



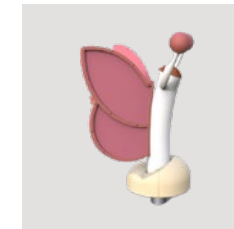
WEEDIE-04 71



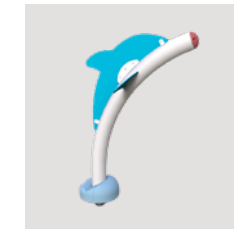
RINGIE 71



SHIPSO 71



BUFFY 72



DOPLHIE 72



FISHIE 72



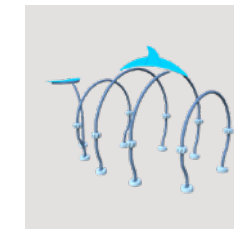
SALLY 72



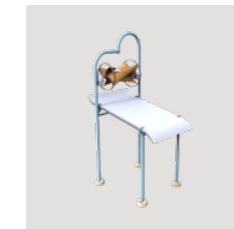
CRAB 73



ANGELICA 73



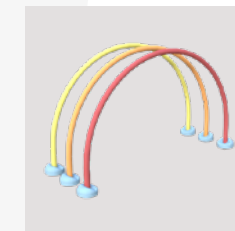
WHALIE 73



TWISTER 73



BIGGYBUCKY 74



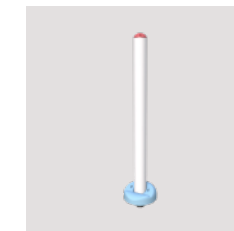
RAINBOWIE 74



PORTAL 74



LOOPIE 74



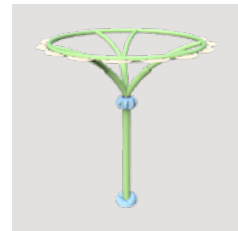
DOMIE 75



HOLYWAY 75



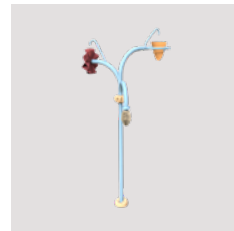
## SYRAY ELEMENTS



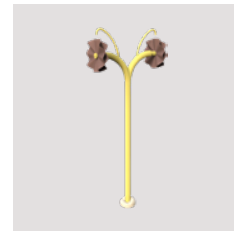
SAVANNY-01 75



SAVANNY-02 75



TRIO 76



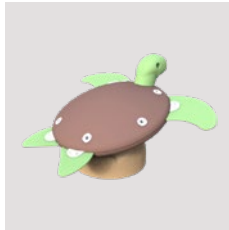
FIRFIR 76



FLUFFY 76



TURTY 77



SMALL TURTY 77

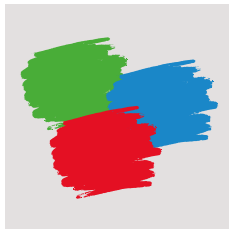


MINI TURTY 77

## APT & COLOR CHART



ADVANCED  
PRODUCTION  
TECHNOLOGIES 78



COLOR CHART 79







# WATERSLIDES.

## Creating A World Of Water Adventures

At Aqualine, we design a diverse range of waterslides that bring excitement, adventure, and fun to water parks worldwide. Our collection includes extreme slides for adrenaline seekers, race slides for competitive thrills, and body slides for a smooth, refreshing ride. No matter the preference, we offer something for every thrill-seeker and family alike.

Our waterslides come in various sizes, shapes, and configurations, making them adaptable to any water park layout. From massive multi-slide complexes to intimate, family-friendly designs, we provide solutions that fit any space and enhance the visitor experience. With custom themes and modular designs, you can create the perfect water attraction, ensuring endless excitement and entertainment for your guests.










# DUBAI

Thrills and Fun at Their Peak

Famous for its skyscrapers, luxury shopping malls, and iconic modern architecture, **Dubai** offers spacious, scenic streets for those who wish to admire its unparalleled beauty.

Dubai's expansive design makes it ideal for group activities. With gentle slopes and wide sliding surfaces, it delivers an exhilarating sense of speed and free-fall. While it appeals to all age groups, it is especially safe and entertaining for families with children.

- **Flow Rate** 80 m<sup>3</sup>/h
- **Body**
- **Capacity** 2 x 180 p/h
- **Section** 500 x 2000
- **Extreme Meter** 4








# RIO DE JANEIRO

The Center of Dynamic Fun

Home to world-famous attractions, **Rio de Janeiro** - one of Latin America's most vibrant cities-is a perfect destination for thrill-seekers.

Starting with an exhilarating burst of speed, riders ascend the ramp, experiencing a sensation of being launched into the sky. They then glide back down the slope, landing gracefully in the water. This free-fall and reverse-slide experience keeps guests coming back for more. Its iconic design makes it a standout attraction in any water park.

- **Flow Rate** 120 / 135 m<sup>3</sup>/h
- **Single / Double Boat**
- **Capacity** 2 x 180 p/h
- **Section** Ø 1400  
500 x 4100  
500 x 5800
- **Extreme Meter** 4-5





# COLORADO

A Unique Adventure Inspired by the Power of Water

Inspired by the raw power and energy of the **Colorado** River-one of nature's most breathtaking wonders-the Colorado slide takes the water park experience to new heights. With sharp turns and steep drops, it delivers an unparalleled thrill for adrenaline seekers.

Designed to mimic the river's winding flow and powerful currents, the Colorado slide creates the sensation of rafting through rushing waters. Riders glide through wide inclines and swift transitions, experiencing the natural rhythm of the water in a journey that is both thrilling and unpredictable.



**Flow Rate** 150 m<sup>3</sup>/h



**Single / Double Boat**



**Capacity** 2 x 180 p/h



**Section** 800 x 1400



**Extreme Meter** 3-4



# TOKYO

An Adventure of Speed and Harmony

Known for its bustling energy, fast pace, and seamless order, **Tokyo** inspires a slide that is both modern and dynamic. The Tokyo slide offers an ever-changing design that thrills speed enthusiasts while providing a fun, exhilarating experience for all visitors.

With rapid transitions and sharp descents, the slide delivers an immersive ride that balances thrill with smooth, flowing motion. Just like the organized chaos of Tokyo's streets, this experience makes riders feel as if they are swiftly navigating through the heart of the city.



**Flow Rate** n x 35 m<sup>3</sup>/h



**Head First Mat**



**Capacity** n x 150 p/h



**Section** n x 650 x 950



**Extreme Meter** 4-5





# SHANGHAI

Keep Up with the Speed of the World

Inspired by **Shanghai's** high-speed trains and cutting-edge technology, the Shanghai slide delivers a thrilling fusion of speed and excitement for your water park. This ride brings Shanghai's passion for velocity to life, taking visitors on a dizzying journey of pure adrenaline.

The experience begins with a steep drop and an instant rush of excitement, followed by sharp turns and high-speed descents for an unmatched thrill. Each transition seamlessly blends speed and fluidity, while the slide's rapid twists and sudden climbs evoke the sensation of riding a high-speed train, making every descent an exhilarating adventure.



**Flow Rate** 90 m<sup>3</sup>/h



**Section** Ø 825



**Body**



**Extreme Meter** 5



**Capacity** 180 p/h



# MOSCOW

Unlimited Fun with a Delightful Design

Inspired by **Moscow's** iconic circular city layout—a captivating fusion of history and modernity—the Moscow slide offers a thrilling, geometry-driven adventure in your water park. With its harmonious design and dynamic movement, this slide takes visitors on an exhilarating ride shaped by the city's unique rhythm.

The journey begins with a steep drop, launching riders into a spacious circular chamber, where centrifugal force creates the thrilling sensation of gliding along the walls. The ride concludes with a breathtaking free-fall moment, delivering a surge of excitement and weightlessness. The Moscow slide beautifully captures the motion, symmetry, and elegance of its namesake, offering a standout experience for guests of all ages.



**Flow Rate** 80 / 120 m<sup>3</sup>/h



**Section** Ø 825  
4000 x 9000



**Body**



**Extreme Meter** 4-5



**Capacity** 120 p/h










# ROME

## The Arena of Fun

Inspired by the grandeur of the Colosseum—one of the most iconic landmarks in history—and the timeless spirit of **Rome**, the Rome slide is designed to be the centerpiece of your water park.

This exhilarating ride begins with a steep descent, launching riders into a spacious circular section where looping, dynamic movements and centrifugal force create the sensation of gliding through a modern-day arena. As riders circle along the walls, they'll feel the majestic atmosphere of ancient Rome come to life. The adventure builds toward a thrilling free-fall finale, delivering an unforgettable experience that leaves a lasting impression on every visitor.

	<b>Flow Rate</b> 120 / 1320 m <sup>3</sup> /h		<b>Single / Double Boat</b>		<b>Capacity</b> 2 x 180 p/h
	<b>Section</b> Ø 1400 4000 x 12000		<b>Extreme Meter</b> 4-5		








# SAN FRANCISCO

## A Thrilling Adventure with Ups and Downs

Inspired by **San Francisco's** iconic hilly streets, the San Francisco slide delivers a lively and adventurous ride that captures the spirit of this dynamic city. Designed to mimic the ups and downs of the city's famous slopes, the slide offers an exhilarating experience filled with rhythm and excitement.

The adventure begins with steep drops, followed by sudden climbing ramps that surprise and delight. Each rise and fall mirrors the thrill of navigating through San Francisco's winding streets, creating a rollercoaster-like sensation for speed lovers. Packed with twists, turns, and unexpected moments, this slide is a must-have for parks looking to deliver non-stop thrills and a memorable ride for adrenaline seekers.

	<b>Flow Rate</b> 60 / 90 m <sup>3</sup> /h		<b>Single / Double Boat</b>		<b>Capacity</b> 2 x 180 p/h
	<b>Section</b> 730 x 1400		<b>Extreme Meter</b> 4		





# ISTANBUL

## Intercontinental Adrenaline

Inspired by the enchanting city of **Istanbul**, where Asia meets Europe and history meets modernity, the Istanbul slide offers a truly unique and exhilarating ride. Drawing from the city's iconic seven hills and the dynamic flow of the Bosphorus, this slide delivers a journey unlike any other.

The adventure features high drops, sweeping turns, and sudden climbs, echoing the dramatic contours of Istanbul's landscape. With every twist and descent, riders experience the sensation of gliding between continents—an intercontinental thrill ride packed with energy, culture, and speed. As you reach the peaks of excitement, it feels as though you're racing toward the Bosphorus itself. The Istanbul slide blends geographic inspiration with adrenaline-pumping fun, making it a standout attraction in any water park.

**Flow Rate** n x 90 m<sup>3</sup>/h  
**Section** Ø 825  
n x 650 x 950

**Body / Head First Mat**  
**Extreme Meter** 3-4

**Capacity** n x 150 p/h



# PARIS

## A Dazzling Journey

Inspired by the timeless charm of **Paris**—a city that dazzles both by day and by night—the Paris slide delivers a captivating adventure in your water park. With its thrilling speed and sharp turns, the design captures the vibrant energy of the day and the mystery of the night, all in one unforgettable ride.

The experience begins with exciting transitions, leading into a fast-spinning tunnel that immerses riders in the sparkling ambiance of Paris after dark. With high-speed drops and dynamic twists, each moment reflects the city's lively rhythm and romantic allure. The Paris slide beautifully merges the joy of daylight with the magic of moonlight, offering a truly enchanting ride for all.

**Flow Rate** 150 m<sup>3</sup>/h  
**Section** Ø 1400

**Single / Double Boat**  
**Extreme Meter** 3-4

**Capacity** 2 x 180 p/h





# NEW YORK

## High-Flying Drops, Rapid Rises

Inspired by the soaring skyscrapers and breathtaking skyline of **New York** City, the New York slide brings bold energy and thrilling excitement to your water park. Designed for adrenaline lovers, this attraction captures the fast-paced spirit and vertical drama of the city that never sleeps.

The ride kicks off with a steep, high-speed drop, immediately launching riders into a thrilling ascent filled with sharp ramps and quick transitions. With its rapid pace and sudden turns, the experience evokes the feeling of soaring above the city, offering a rush of excitement from start to finish. The New York slide delivers a powerful free-fall sensation and embodies the city's love for height, speed, and unforgettable moments, making it an essential highlight of any modern water park.



**Flow Rate** 90 m<sup>3</sup>/h



**Body**



**Capacity** 180 p/h



**Section** 700 x 1000



**Extreme Meter** 4-5



# BARCELONA

## The Harmony of Flow and Speed

Inspired by **Barcelona**'s stunning skyline and coastal charm, the Barcelona slide delivers a vibrant and engaging experience that reflects the city's unique blend of art, architecture, and energy. Designed with multi-lane racing action, this attraction brings friendly competition and fast-paced thrills to your water park.

Riders are invited to race side by side down various lanes, each offering different curves, slopes, and sensations. The layout mimics the city's winding streets leading to the sea—balancing smooth drops, rapid transitions, and a continuous sense of motion. The Barcelona slide combines architectural elegance with energetic fun, making it a standout feature that brings the spirit of the Mediterranean to life with every ride.



**Flow Rate** n x 35 m<sup>3</sup>/h



**Body**



**Capacity** n x 150 p/h



**Section** n x 650 x 950



**Extreme Meter** 3-4





# MUMBAI

## Colorful Wave, Fast Adventure

Inspired by the vibrant spirit of **Mumbai**, where the energy of Bollywood, colorful culture, and nonstop movement come together, the Mumbai slide brings a dynamic burst of life to your water park. With its wave-like design, this attraction combines fluid motion with thrilling speed, offering a ride that's as captivating as the city itself.

The slide features rising and falling slopes that deliver fast-paced drops and smooth transitions, echoing the pulse and rhythm of Mumbai's streets. Bright, bold colors enhance the experience, immersing riders in a world that reflects the joy, excitement, and spectacle of Indian cinema. With its adrenaline-packed flow and vibrant design, the Mumbai slide creates a unique adventure full of fun, flair, and unforgettable moments—making it a must-have centerpiece for any water park.



**Flow Rate** 60 / 150 m<sup>3</sup>/h



**Single / Double Boat**



**Capacity** 2 x 180 p/h



**Section** 500 x 2400



**Extreme Meter** 4-5



# LOS ANGELES

## Endless Fun, Endless Thrills

Inspired by the nonstop energy and vibrant lifestyle of **Los Angeles**, the Los Angeles slide brings a burst of excitement, glamour, and adventure to your water park. Just like the city itself—with its iconic entertainment, diverse culture, and thrilling pace—this slide delivers an unforgettable, high-energy experience.

With high-speed descents, sweeping turns, and dynamic transitions, the ride reflects the city's exhilarating pulse. Its expansive, flowing design invites riders into an immersive journey, echoing the excitement of exploring L.A.'s sun-soaked streets and dazzling attractions. Feel the limitless thrill of Los Angeles with every twist and drop—where fun never stops and adventure is always just around the corner.



**Flow Rate** 120 m<sup>3</sup>/h



**Body**



**Capacity** 180 p/h



**Section** 700 x 1000



**Extreme Meter** 3-4





# CAPE TOWN

Small in Size, Big on Thrills

Inspired by the rich heritage and breathtaking landscapes of **Cape Town**—South Africa's iconic "Mother City"—this slide delivers a compact yet exhilarating adventure to your water park. Designed for maximum excitement in minimal space, the Cape Town slide captures the spirit of exploration, history, and natural beauty.

The journey begins with narrow, high-speed passages, followed by sharp turns and sudden drops that keep riders on the edge of their seats. Every twist evokes the feeling of discovering Cape Town's storied streets and coastal views. Despite its compact footprint, the Cape Town slide offers a powerful ride experience, proving that big thrills can come in small packages—a true testament to fun without limits.



**Flow Rate** 120 m<sup>3</sup>/h



**Section** 600 x 900



**Body**



**Extreme Meter** 3



**Capacity** 180 p/h



# SYDNEY

Reach the Peak of Adrenaline

Inspired by the dynamic city of **Sydney** and the breathtaking Blue Mountains, this water slide brings vibrant energy to your water park. The design combines the natural beauty of the mountains with the bustling energy of the city, offering a truly unique experience for every visitor.

The Sydney slide is crafted with thrilling descents and captivating twists, ensuring a rush of freedom and excitement with every ride. With climbs reminiscent of Blue Mountains' towering peaks and fluid transitions that capture Sydney's vibrant atmosphere, it offers a thrilling journey for visitors of all ages.



**Flow Rate** 300 m<sup>3</sup>/h



**Section** Ø 1400  
6800 x 7500



**Single / Double Boat**



**Extreme Meter** 3-4



**Capacity** 2 x 180 p/h





# BERLIN

## The Perfect Balance of Order and Fun

Inspired by **Berlin's** unique blend of historic charm and modern energy, this slide captures the city's spirit of structure, movement, and excitement. Like Berlin itself, the experience is smooth, precise, and full of surprises.

The Berlin slide begins with sharp, calculated turns and high-speed drops, followed by a series of thrilling, rhythmic transitions. Each element reflects the city's architectural symmetry and vibrant pulse, creating an exhilarating ride that's both well-structured and full of adventure. Combining speed, flow, and balance, the Berlin slide brings a bold yet orderly thrill to your water park—where fun meets flawless design



**Flow Rate** 120 m<sup>3</sup>/h



**Body**



**Capacity** 180 p/h



**Section** Ø 825



**Extreme Meter** 3-4







# AQUATIC PLAY STRUCTURES.

## Dive Into a World of Imagination

Specially crafted for children, our Aquatic Play Structures transform water play into a magical experience—combining creativity, adventure, and safety. These vibrant structures come in various sizes and themes, featuring interactive play zones, gentle slides, water fountains, jets, splash elements, and rotating features designed to captivate young imaginations.

From toddlers to older children, each structure is thoughtfully engineered to engage every age group with surprising water effects, dynamic water wheels, and sensory-rich activities. Every splash and spray is an invitation to explore, play, and learn.

Beyond fun, these play structures promote physical development and social interaction. Water-based activities support motor skill growth, confidence building, and teamwork, as children connect with peers through shared discovery and joyful play.

Children will giggle as they dash through fountains, dodge tipping buckets, and dive beneath waterfalls, discovering new adventures at every turn. Each structure creates an environment where exploration meets education, offering endless moments of safe, stimulating fun.

Perfect for families, these aquatic zones provide a welcoming space where parents and children can bond, laugh, and create lasting memories. Whether it's a first splash or a fearless slide, our Aquatic Play Structures offer unforgettable water-filled adventures for the young—and the young at heart.





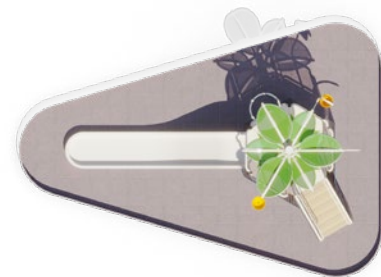
## MiniAPS 101



ISOMETRIC



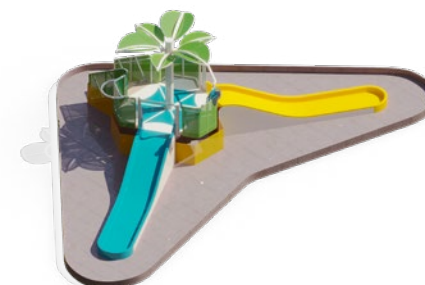
FRONT



TOP  
AREA: 66 M<sup>2</sup>



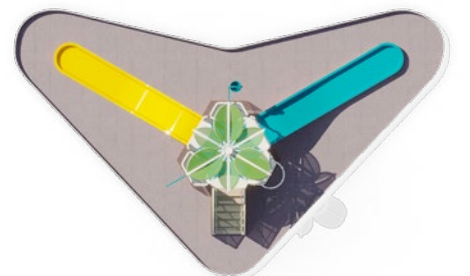
## MiniAPS 102



ISOMETRIC



FRONT



TOP  
AREA: 88 M<sup>2</sup>





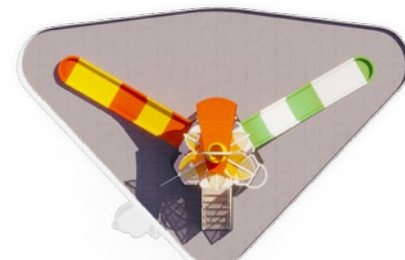
## MiniAPS B102



ISOMETRIC



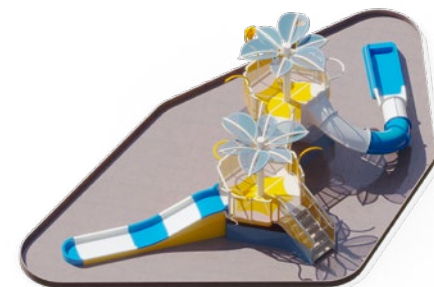
FRONT



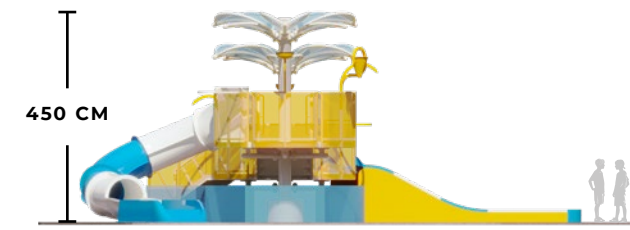
TOP  
AREA: 100 M<sup>2</sup>



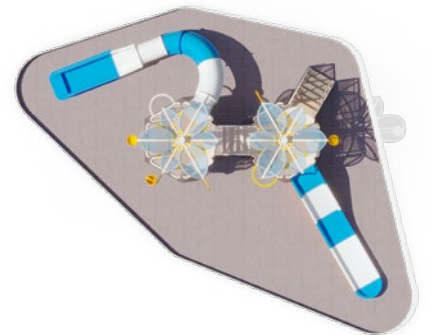
## MiniAPS 202



ISOMETRIC



FRONT

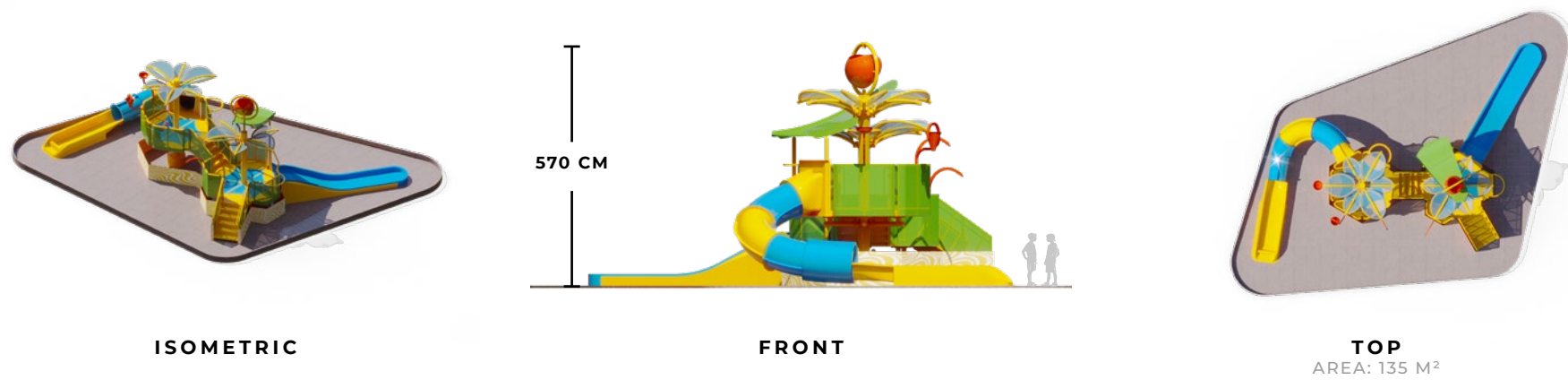


TOP  
AREA: 132 M<sup>2</sup>

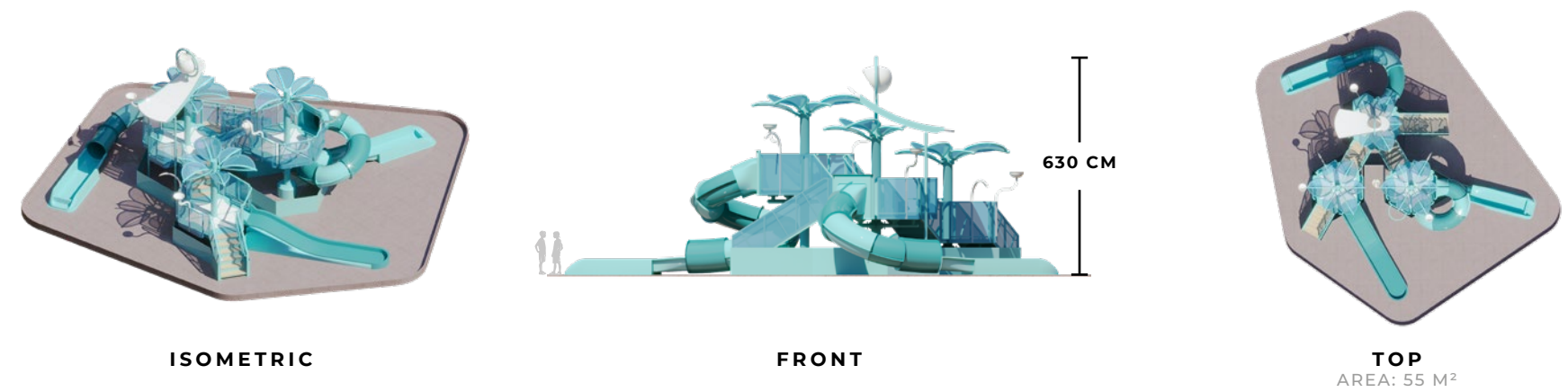




## MiniAPS B202a



## MiniAPS B303



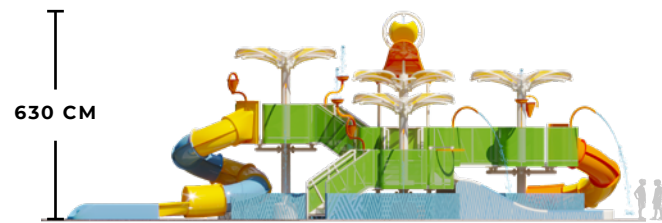




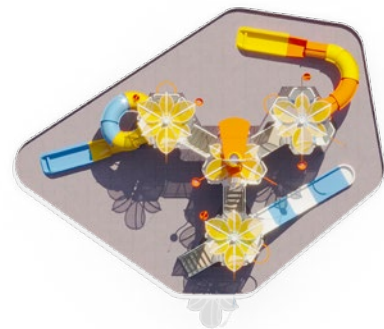
## MiniAPS B403



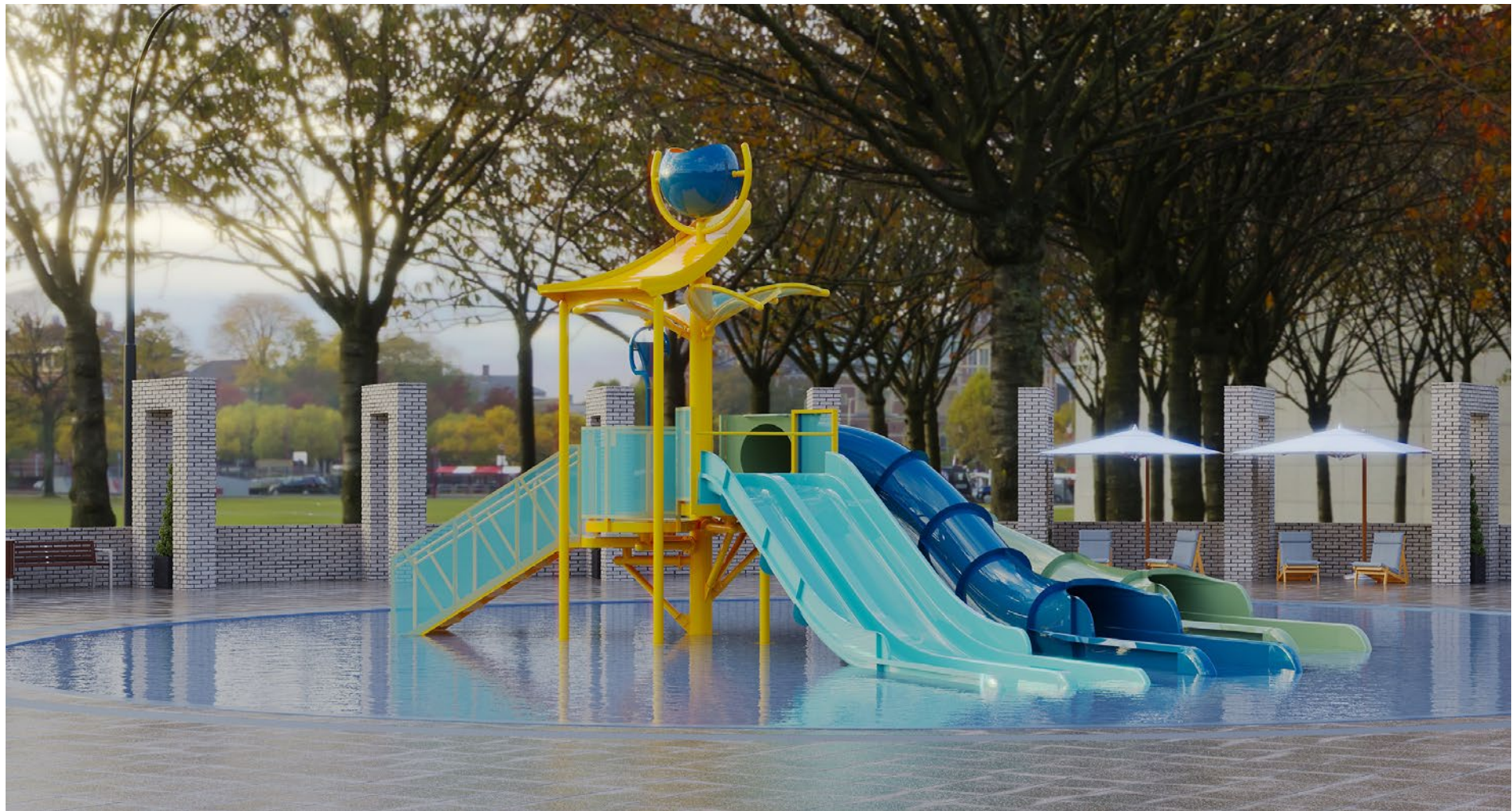
ISOMETRIC



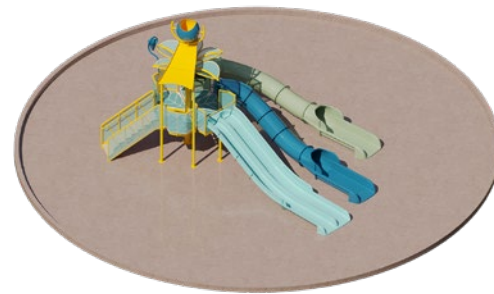
FRONT



TOP  
AREA: 200 M<sup>2</sup>



## APS 13



ISOMETRIC



FRONT

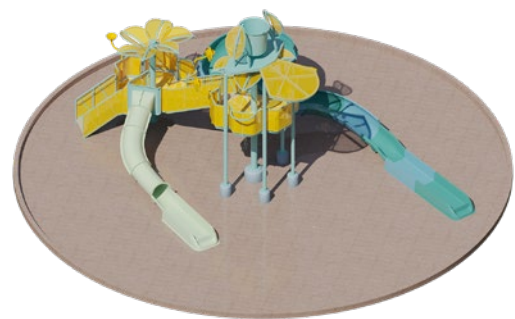


TOP  
AREA: 300 M<sup>2</sup>





## APS 22



ISOMETRIC



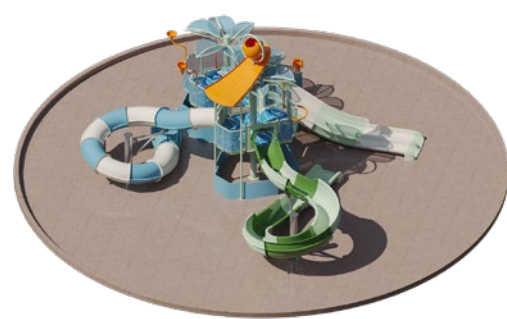
FRONT



TOP  
AREA: 300 M<sup>2</sup>



## APS 23



ISOMETRIC



FRONT

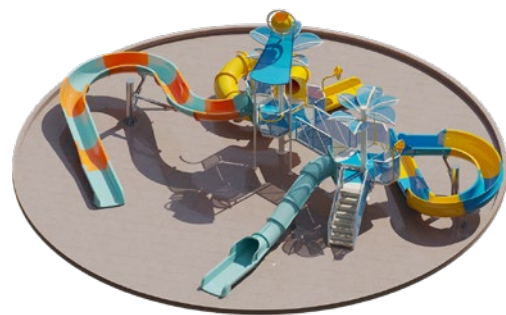


TOP  
AREA: 300 M<sup>2</sup>





## APS 24



ISOMETRIC



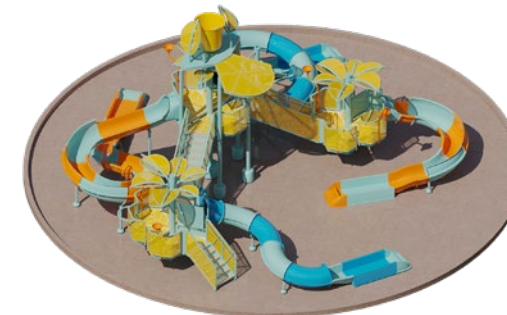
FRONT



TOP  
AREA: 300 M<sup>2</sup>



## APS 34



ISOMETRIC



FRONT



TOP  
AREA: 300 M<sup>2</sup>





## APS 55



ISOMETRIC



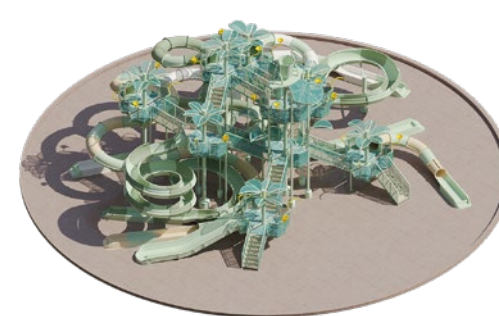
FRONT



TOP  
AREA: 800 M<sup>2</sup>



## APS 87



ISOMETRIC



FRONT



TOP  
AREA: 800 M<sup>2</sup>



# THEMED AQUATIC PLAY STRUCTURES



## APS 55 - PARADISE

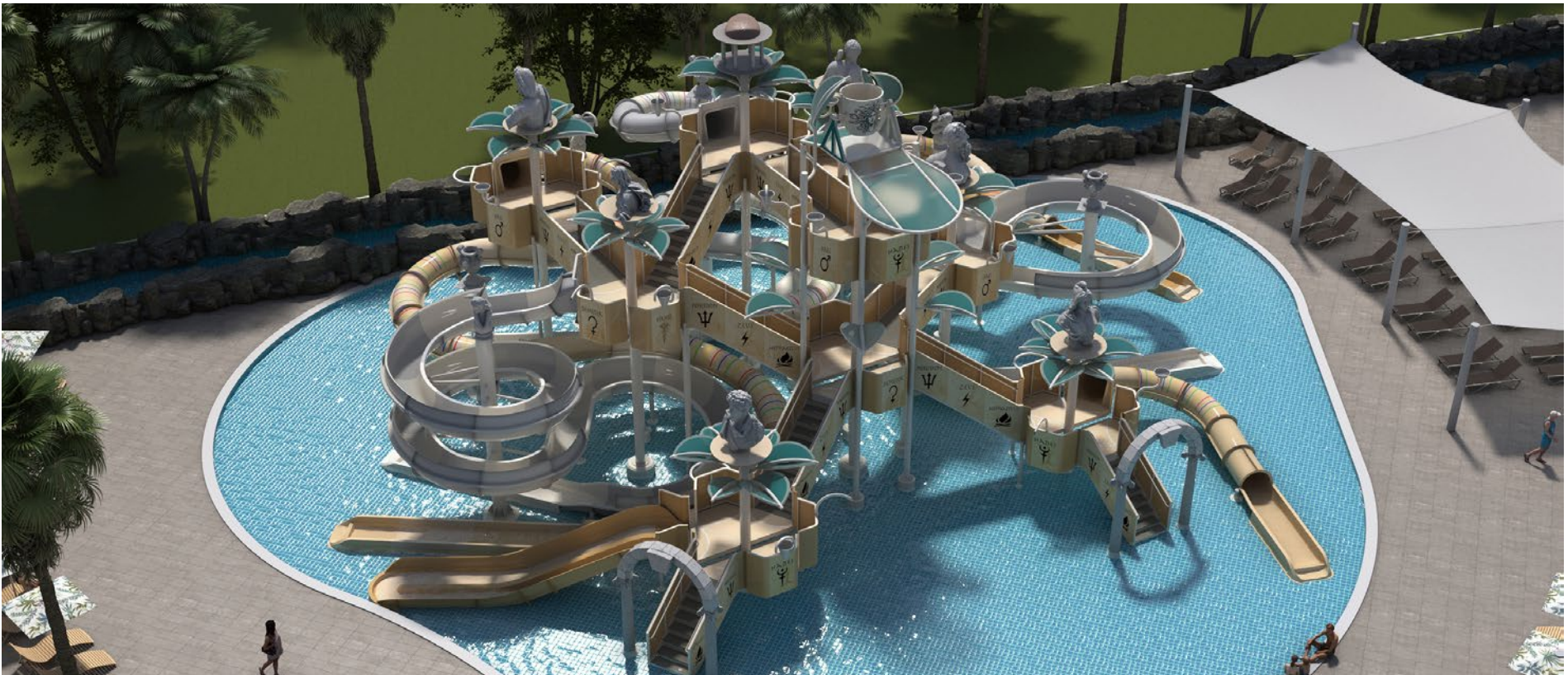




# APS 68 - LOST ISLAND



# APS 87 - ANCIENT GREEK





# APS 23 - AIRPORT



# APS 12 - NEOTEXTURE





# KIDS ANIMATIONS

## A Magical World for Kids!

Water parks are more than just thrilling slides—they're places where imagination comes alive, especially for the youngest visitors. Our specially designed children's play areas and animation features bring a whole new dimension of fun, filled with colorful characters, interactive water effects, and engaging themes that ignite creativity and delight.

Each element is thoughtfully crafted to provide safe, hands-on play experiences. From surprise sprayers and playful fountains to dynamic water games and themed structures, children are encouraged to explore, discover, and engage in a world built just for them.

Customizable to fit the unique theme of your park, these zones ensure that children of all ages enjoy a vibrant and interactive environment. Creative designs and age-appropriate attractions transform every visit into a magical memory, full of laughter, learning, and joyful splashes.

Are you ready to create a world where children's laughter fills the air and water comes to life? Let's bring the magic of play to every corner of your water park!





## SHIP SLIDE

A Big Adventure for Little Captains!

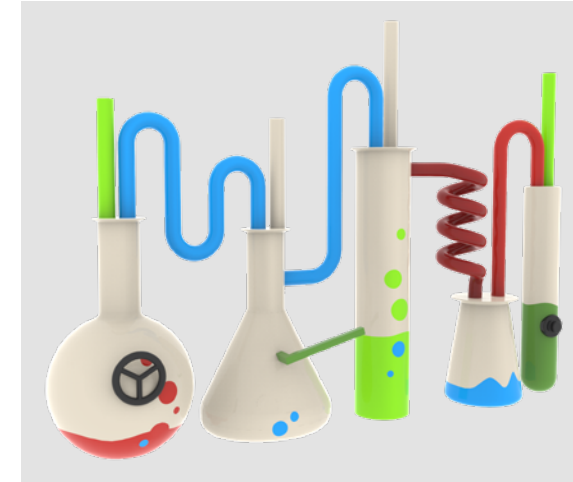
**Option 1:** ▶▶ Supply Line Ø 32 mm 🔹 Flow Rate 2 m³/h

**Option 2:** ▶▶ Supply Line Ø 40 mm 🔹 Flow Rate 10 m³/h

📏 3.71 x 3.69 x 3.29 m

👤 6<Age

The product is suitable for wet/dry use.



## LABORATORY PLAYSET

Experiment Time for the Scientists of Tomorrow!

▶▶ Supply Line Ø 50 mm 🔹 Flow Rate 20 m³/h

📏 1.02 x 4.34 x 3.1 m

👤 6<Age

The product is suitable for wet/dry use.

## AIRPLANE SLIDE

Get ready for takeoff!

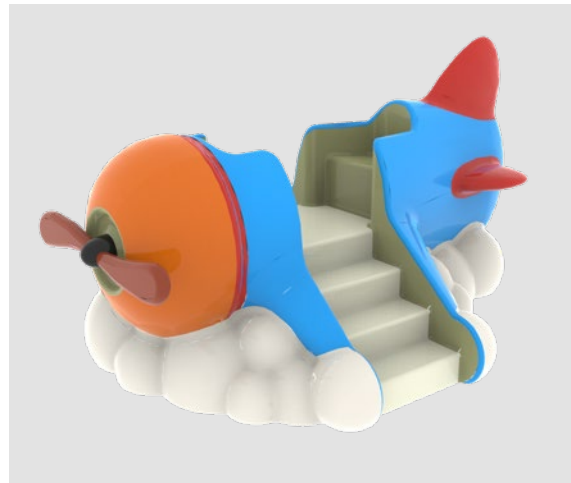
**Option 1:** ▶▶ Supply Line Ø 32 mm 🔹 Flow Rate 2 m³/h

**Option 1:** ▶▶ Supply Line Ø 32 mm 🔹 Flow Rate 3 m³/h

2.75 x 2.54 x 1.47 m 📏

4<Age 👤

The product is suitable for wet/dry use.



## SUBMARINE PLAY CABIN

Dive into the Depths, Discover the Adventure!

▶▶ Supply Line Ø 32 mm 🔹 Flow Rate 5 m³/h

2.2 x 4.5 x 3.62 m 📏

6<Age 👤

The product is suitable for wet/dry use.



## TRAIN SLIDE

An Exciting Journey on the Rails!

**Option 1:** ▶▶ Supply Line Ø 32 mm 🔹 Flow Rate 2 m³/h

**Option 2:** ▶▶ Supply Line Ø 40 mm 🔹 Flow Rate 10 m³/h

📏 1.36 x 3.86 x 2.7 m

👤 6<Age

The product is suitable for wet/dry use.



## CINDERELLA SLIDE

Join a Fairy Tale Journey!

**Option 1:** ▶▶ Supply Line Ø 32 mm 🔹 Flow Rate 2 m³/h

**Option 2:** ▶▶ Supply Line Ø 50 mm 🔹 Flow Rate 20 m³/h

📏 3.38 x 4.2 x 2.62 m

👤 4<Age

The product is suitable for wet/dry use.





## FAIRY TALE HOUSE SLIDE

Step into a Fairytale World!

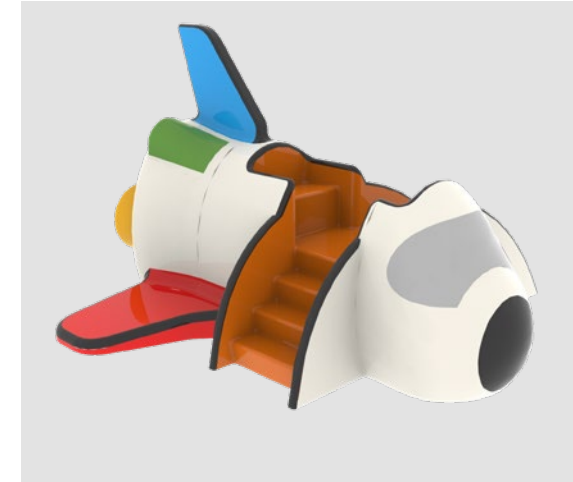
**Option 1:** ▶▶ Supply Line Ø 32 mm 💧 Flow Rate 2 m³/h

**Option 2:** ▶▶ Supply Line Ø 32 mm 💧 Flow Rate 5 m³/h

📏 1.66 x 2.63 x 3.29 m

👤 6<Age

The product is suitable for wet/dry use.



## SPACE SHUTTLE SLIDE

Journey Among the Stars

**Option 1:** ▶▶ Supply Line Ø 32 mm 💧 Flow Rate 2 m³/h

**Option 2:** ▶▶ Supply Line Ø 50 mm 💧 Flow Rate 15 m³/h

📏 2.92 x 2.91 x 1.87 m

👤 4<Age

The product is suitable for wet/dry use.

## SPACE POD SLIDE

Journey to the Depths of Space!

**Option 1:** ▶▶ Supply Line Ø 32 mm 💧 Flow Rate 2 m³/h

**Option 1:** ▶▶ Supply Line Ø 50 mm 💧 Flow Rate 20 m³/h

📏 2.82 x 4.06 x 2.32 m

👤 4<Age

The product is suitable for wet/dry use.



## ROCKET SLIDE

Get Ready for Launch!

**Option 1:** ▶▶ Supply Line Ø 32 mm 💧 Flow Rate 2 m³/h

**Option 1:** ▶▶ Supply Line Ø 40 mm 💧 Flow Rate 10 m³/h

📏 1.74 x 4.4 x 3.31 m

👤 6<Age

The product is suitable for wet/dry use.



## TOWER SLIDE

Waiting to Be Conquered by Heroes!

**Option 1:** ▶▶ Supply Line Ø 32 mm 💧 Flow Rate 2 m³/h

**Option 2:** ▶▶ Supply Line Ø 40 mm 💧 Flow Rate 10 m³/h

📏 3 x 2.76 x 5.23 m

👤 6<Age

The product is suitable for wet/dry use.



## SPACE STATION SLIDE

Discover the Mysteries of Space

**Option 1:** ▶▶ Supply Line Ø 32 mm 💧 Flow Rate 2 m³/h

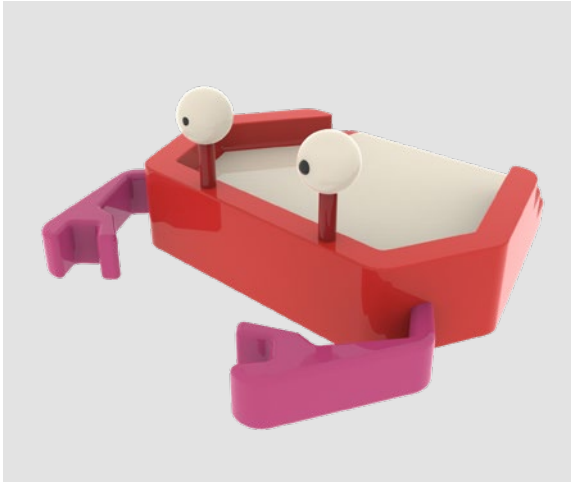
**Option 2:** ▶▶ Supply Line Ø 40 mm 💧 Flow Rate 5 m³/h

📏 3.46 x 2.91 x 2.83 m

👤 6<Age

The product is suitable for wet/dry use.





## CRAB PLAY PLATFORM

Claws Are Working, Splashing Begins!

Supply Line Ø 32 mm Flow Rate 4 m<sup>3</sup>/h

2.32 x 2.12 x 0.93 m

4<Age

The product is suitable for wet/dry use.

## SHARK SLIDE

Escape the Shark, Race with the Waves!

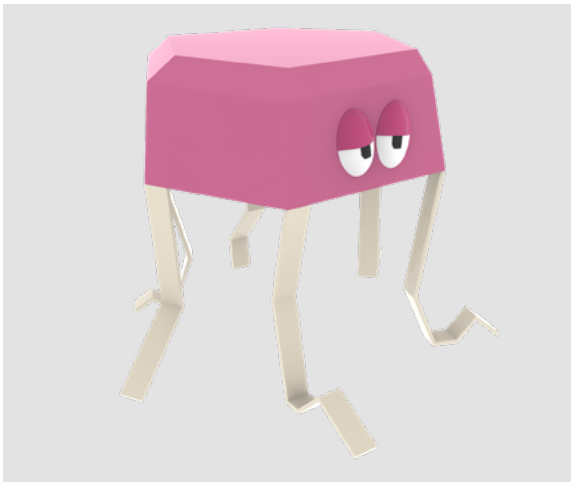
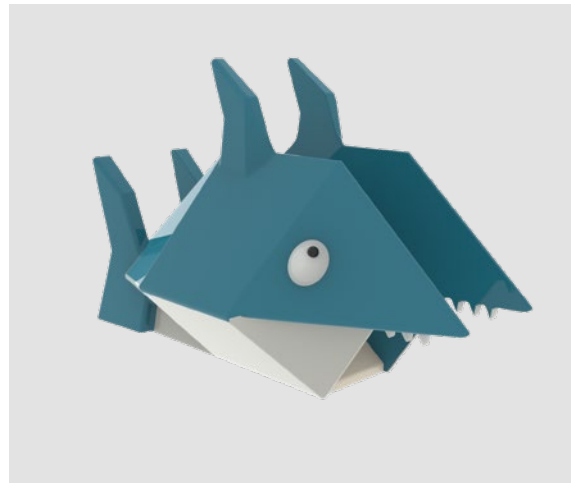
Option 1: Supply Line Ø 32 mm Flow Rate 2 m<sup>3</sup>/h

Option 1: Supply Line Ø 32 mm Flow Rate 6 m<sup>3</sup>/h

2.17 x 3.5 x 1.6 m

4<Age

The product is suitable for wet/dry use.



## JELLYFISH WATERFALL

Enjoy the Water, Have Fun Together!

Supply Line Ø 50 mm Flow Rate 20 m<sup>3</sup>/h

3.53 x 3.12 x 2.53 m

4<Age

Suitable for 4 users.



## SEAL SHOWER

Shower Time Is Now More Fun for Kids!

Supply Line Ø 32 mm Flow Rate 3 m<sup>3</sup>/h

2.09 x 2.14 x 2.66 m

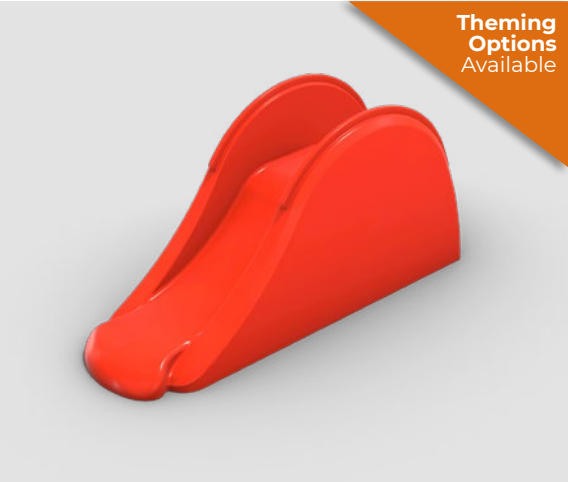
6<Age

## CAR

Join the Water-Filled Fun!



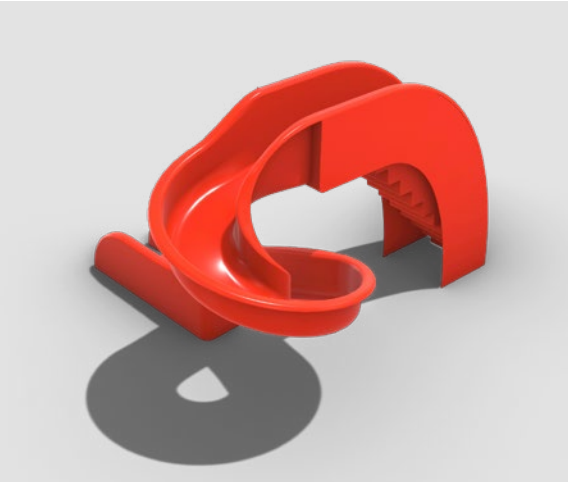
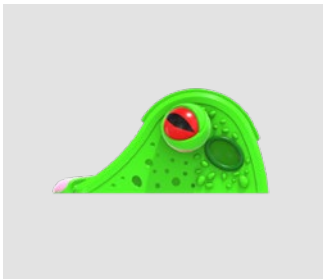
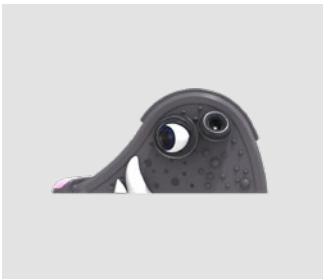




Theming  
Options  
Available

## TINY SLIDE

► Supply Line - ► Flow Rate 20 m<sup>3</sup>/h  
2.37 x 0.82 x 1.15 m  
0.70 m  
0.5 m  
4<Age



## CURL SLIDE

► Supply Line - ► Flow Rate 4 m<sup>3</sup>/h  
4.26 x 3.82 x 2.49 m  
1.85 m  
0.5 m  
3<Age<10

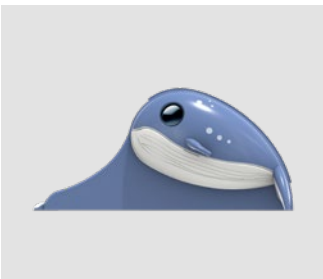


## HUGE SLIDE

► Supply Line - ► Flow Rate 4 m<sup>3</sup>/h  
5.51 x 0.82 x 2.59 m  
1.85 m  
0.5 m  
3<Age<10



Theming  
Options  
Available

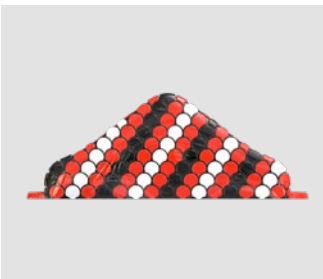
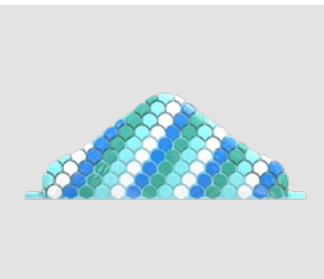


## QUAD SLIDE

► Supply Line - ► Flow Rate -  
4.40 x 2.54 x 1.62 m  
1.05 m  
0.5 m  
3<Age<10



Theming  
Options  
Available







## HIPPO SLIDE

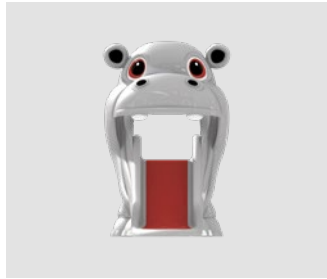
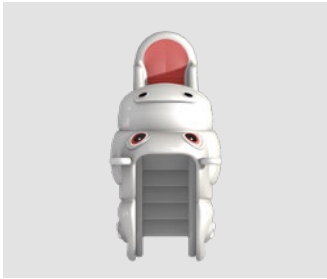
Supply Line - Flow Rate -

2.48 x 1.21 x 1.79 m

0.70 m

0.5 m

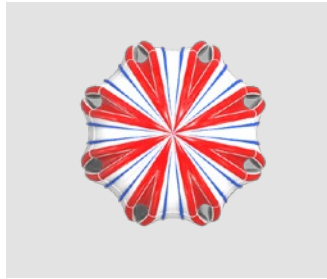
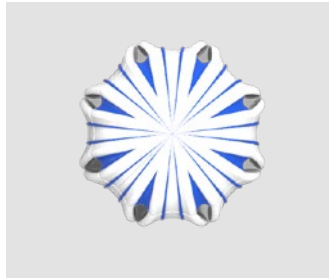
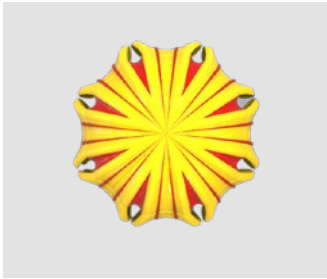
4<Age



## JELLYFISH FOUNTAIN

Supply Line - Flow Rate 4 m<sup>3</sup>/h

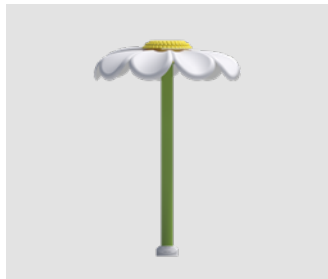
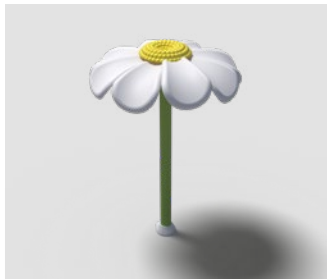
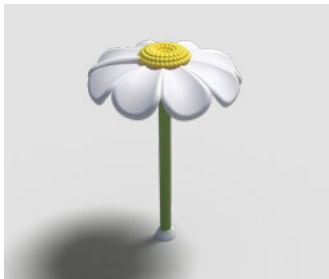
1.60 x 1.60 x 3.16 m



## DAISY FOUNTAIN

Supply Line - Flow Rate 4 m<sup>3</sup>/h

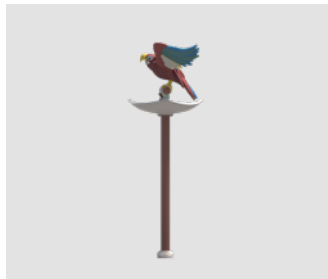
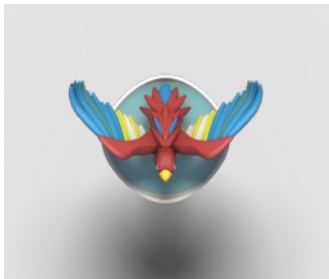
2 x 2 x 3 m



## PARROT FOUNTAIN

Supply Line - Flow Rate 4 m<sup>3</sup>/h

2.59 x 2.45 x 4 m

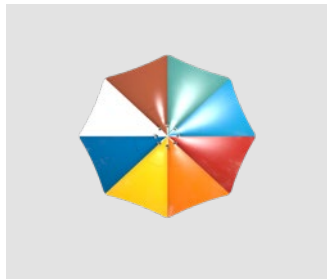









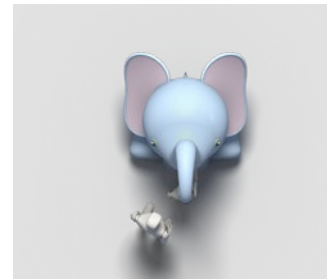
## UMBRELLA FOUNTAIN

 Supply Line - 
  Flow Rate 4 m<sup>3</sup>/h  
 2.15 x 2.15 x 2.83 m



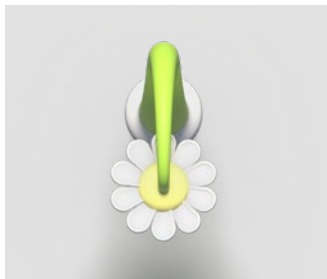
## ELEPHANT SHOWER

 Supply Line - 
  Flow Rate 4 m<sup>3</sup>/h  
 1.87 x 1.54 x 2.70 m



## DAISY SHOWER

 Supply Line - 
  Flow Rate 4 m<sup>3</sup>/h  
 1.57 x 0.83 x 2.90 m 







# SPRAY PARKS

## Water Fun Taken to a Whole New Level!

On warm summer days, nothing beats the joy of refreshing water play—and Spray Parks are the ultimate destination for it! Designed especially for children, these interactive water play zones invite young adventurers to explore a vibrant world of dancing fountains, colorful themes, and innovative aquatic features.

From dynamic water jets at varying heights to spinning wheels and playful splash effects, Spray Parks create an exciting and safe environment where children can cool off, stay active, and let their imaginations run wild. These areas are suitable for all age groups, encouraging creative exploration and promoting physical development through engaging, hands-on water games.

More than just a place to play, Spray Parks are spaces for connection and discovery. Whether it's running through water tunnels, dodging surprise sprays, or sharing giggles with friends under a fountain, every visit is filled with joy, laughter, and lasting memories.

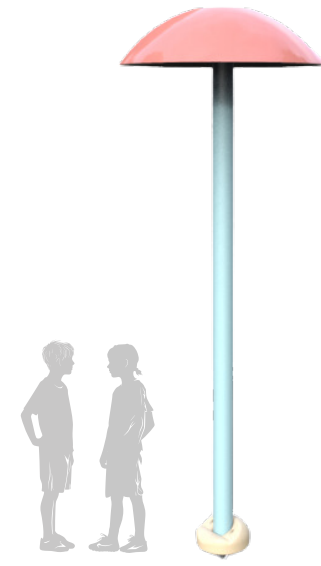
At Spray Park, every splash tells a story—a story of fun, friendship, and unforgettable summer adventures!





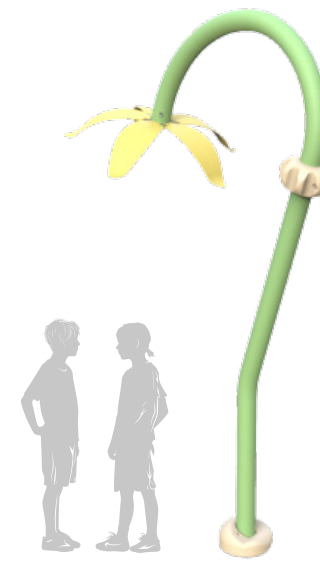
## BUCKY

💧 Flow Rate 7 m<sup>3</sup>/h ⚙️ Pressure 0,7 bar



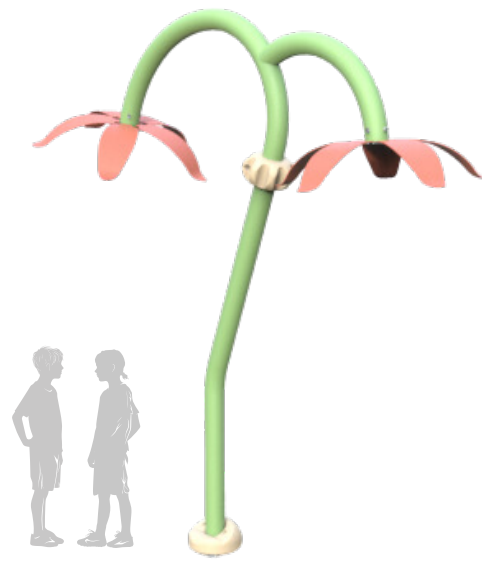
## MUSHROOM

💧 Flow Rate 30 m<sup>3</sup>/h ⚙️ Pressure 0,7 bar



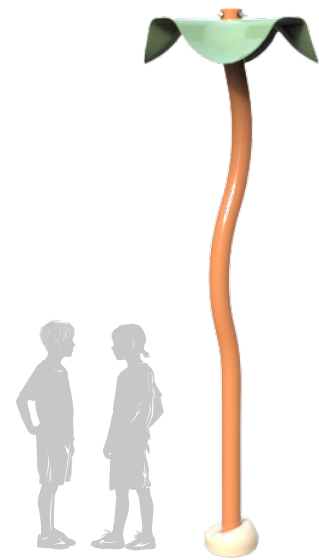
## HANGOVER-01

💧 Flow Rate 7 m<sup>3</sup>/h ⚙️ Pressure 0,7 bar



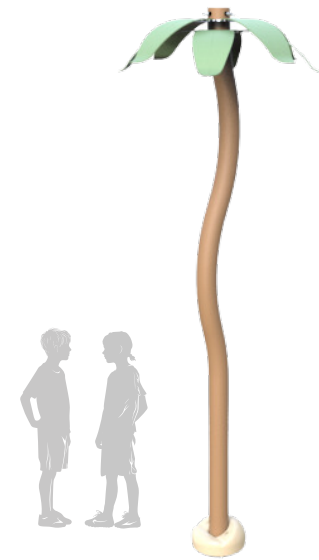
## HANGOVER-02

💧 Flow Rate 7 m<sup>3</sup>/h ⚙️ Pressure 0,7 bar



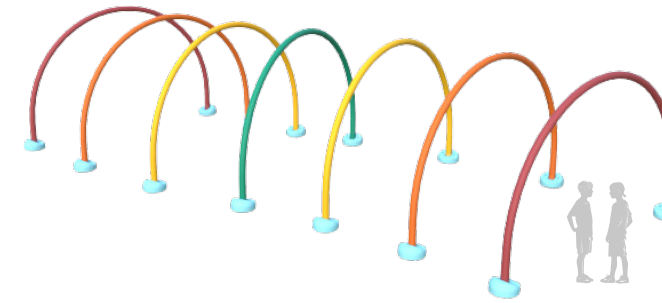
## WEIRDO

💧 Flow Rate 7 m<sup>3</sup>/h ⚙️ Pressure 0,7 bar



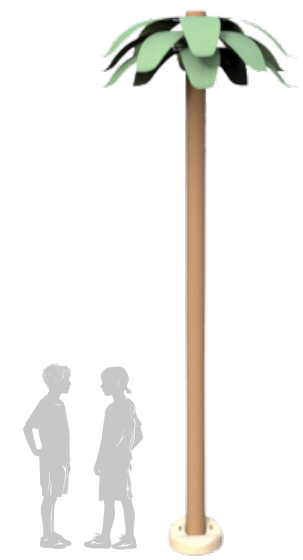
## WAVIE

💧 Flow Rate 7 m<sup>3</sup>/h ⚙️ Pressure 0,7 bar



## WORM HOLE

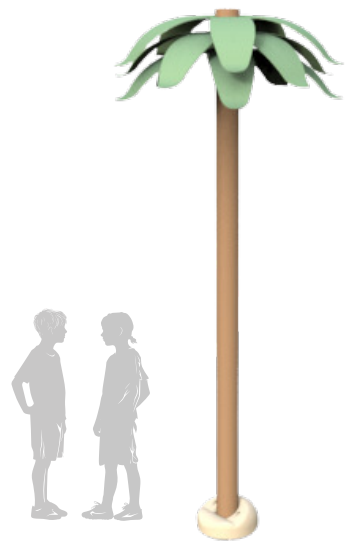
💧 Flow Rate 35 m<sup>3</sup>/h ⚙️ Pressure 0,7 bar



## PALMIE-01

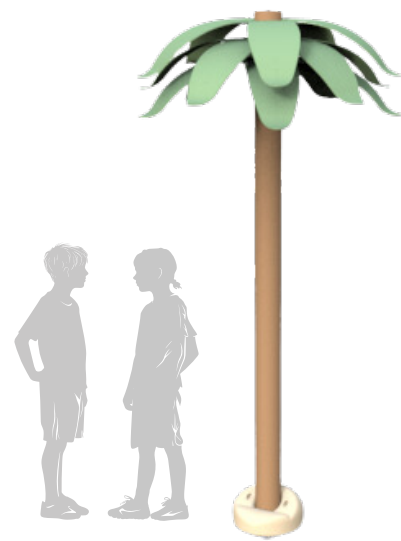
💧 Flow Rate 8 m<sup>3</sup>/h ⚙️ Pressure 0,7 bar





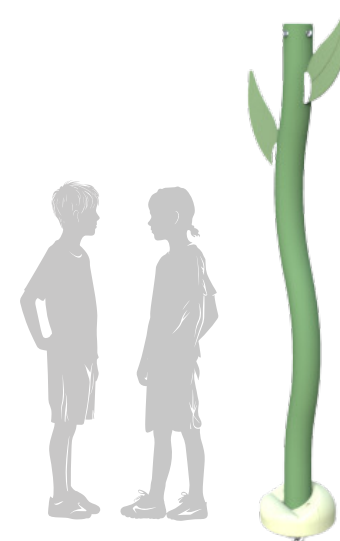
## PALMIE-02

💧 Flow Rate 8 m<sup>3</sup>/h ⚙️ Pressure 0,7 bar



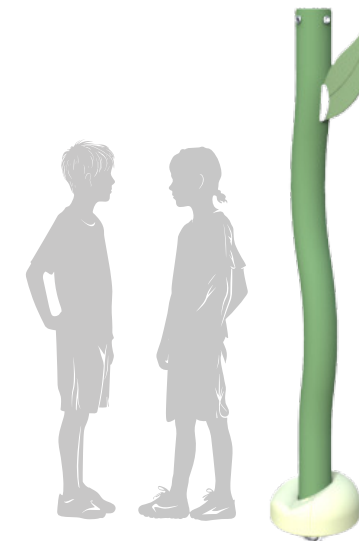
## PALMIE-03

💧 Flow Rate 8 m<sup>3</sup>/h ⚙️ Pressure 0,7 bar



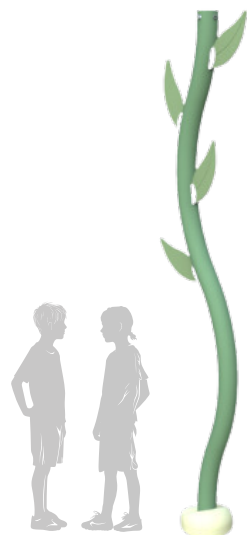
## WEEDIE-03

💧 Flow Rate 4 m<sup>3</sup>/h ⚙️ Pressure 0,7 bar



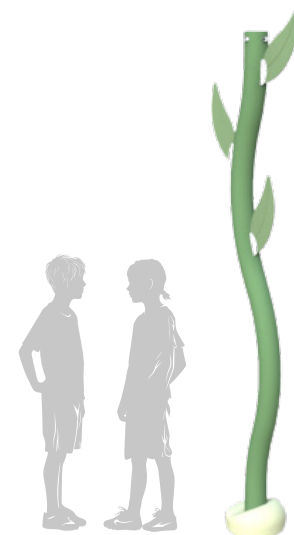
## WEEDIE-04

💧 Flow Rate 4 m<sup>3</sup>/h ⚙️ Pressure 0,7 bar



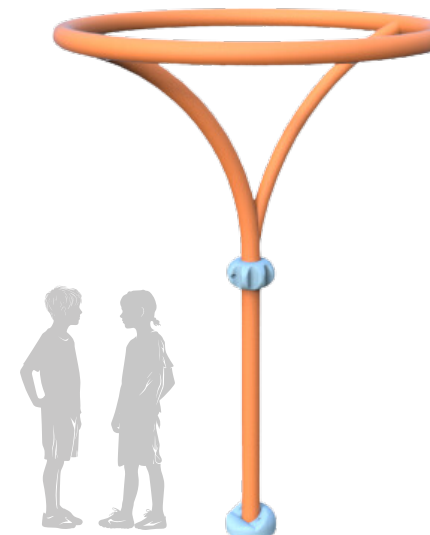
## WEEDIE-01

💧 Flow Rate 4 m<sup>3</sup>/h ⚙️ Pressure 0,7 bar



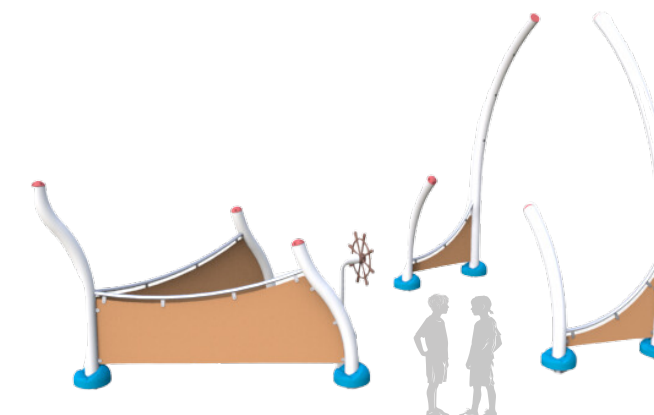
## WEEDIE-02

💧 Flow Rate 4 m<sup>3</sup>/h ⚙️ Pressure 0,7 bar



## RINGIE

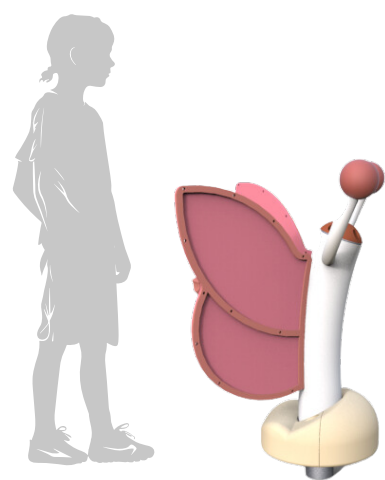
💧 Flow Rate 7 m<sup>3</sup>/h ⚙️ Pressure 0,7 bar



## SHIPSO

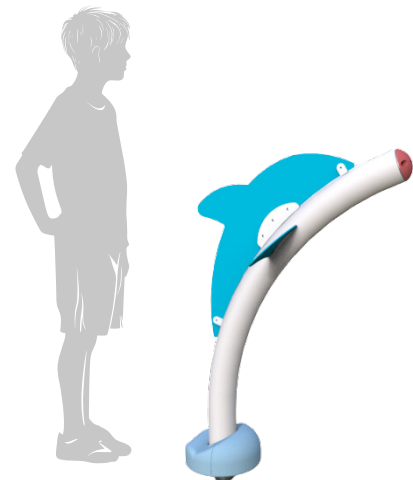
💧 Flow Rate 23 m<sup>3</sup>/h ⚙️ Pressure 0,7 bar





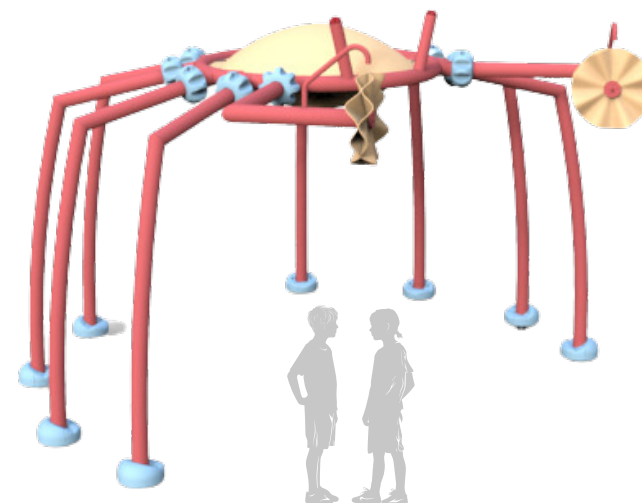
## BUFFY

💧 Flow Rate 4 m<sup>3</sup>/h    🌀 Pressure 0,5 bar



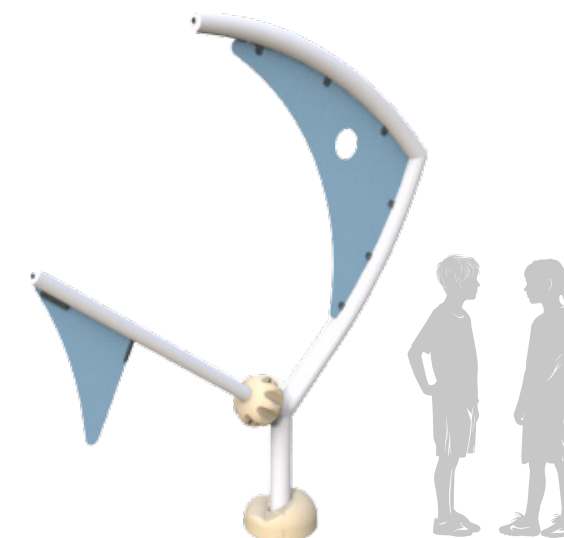
## DOLPHIE

💧 Flow Rate 4 m<sup>3</sup>/h    🌀 Pressure 0,5 bar



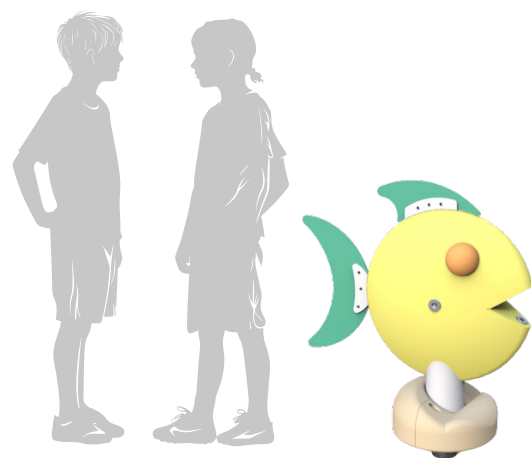
## CRAB

💧 Flow Rate 14 m<sup>3</sup>/h    🌀 Pressure 0,8 bar



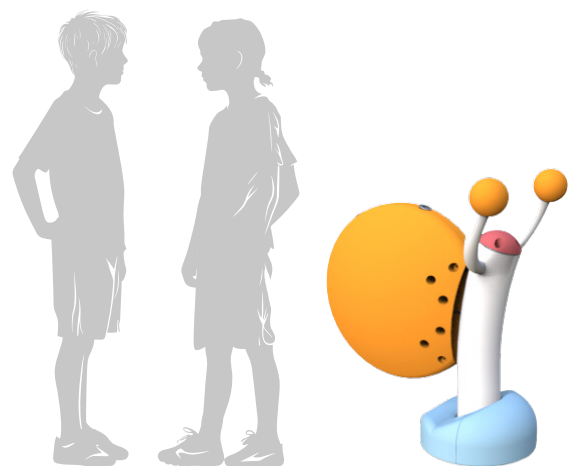
## ANGELICA

💧 Flow Rate 7 m<sup>3</sup>/h    🌀 Pressure 0,7 bar



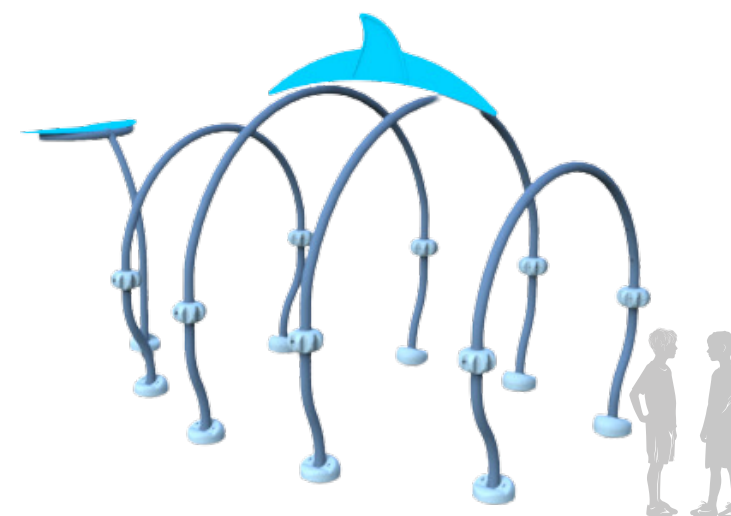
## FISHIE

💧 Flow Rate 4 m<sup>3</sup>/h    🌀 Pressure 0,5 bar



## SALLY

💧 Flow Rate 4 m<sup>3</sup>/h    🌀 Pressure 0,5 bar



## WHALIE

💧 Flow Rate 24 m<sup>3</sup>/h    🌀 Pressure 0,7 bar



## TWISTER

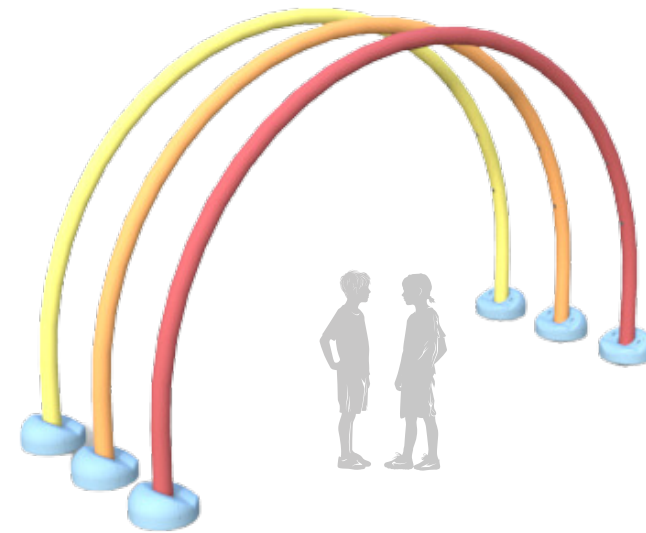
💧 Flow Rate 9 m<sup>3</sup>/h    🌀 Pressure 0,7 bar





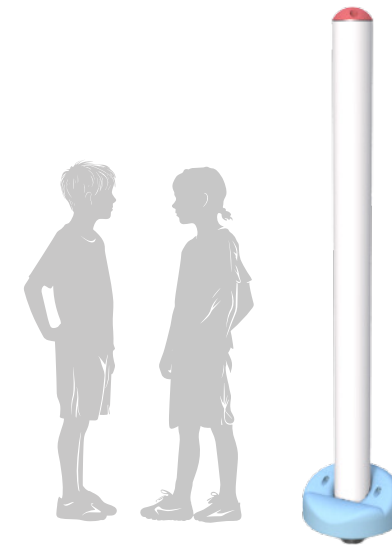
## BIGGYBUCKY

Flow Rate 9 m<sup>3</sup>/h Pressure 0,7 bar



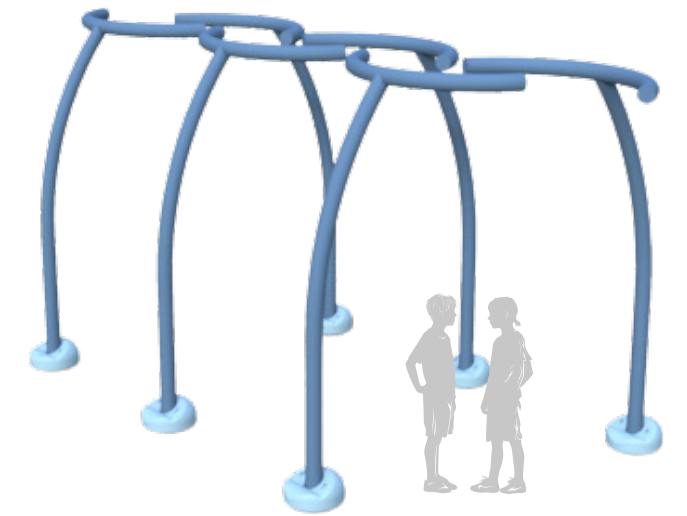
## RAINBOWIE

Flow Rate 15 m<sup>3</sup>/h Pressure 0,7 bar



## DOMIE

Flow Rate 9 m<sup>3</sup>/h Pressure 0,7 bar



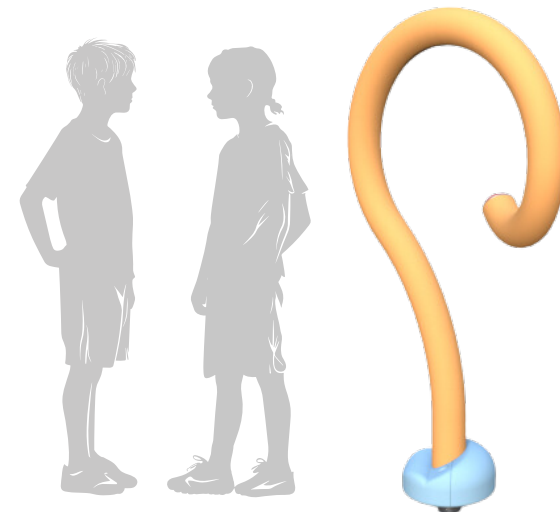
## HOLYWAY

Flow Rate 30 m<sup>3</sup>/h Pressure 0,7 bar



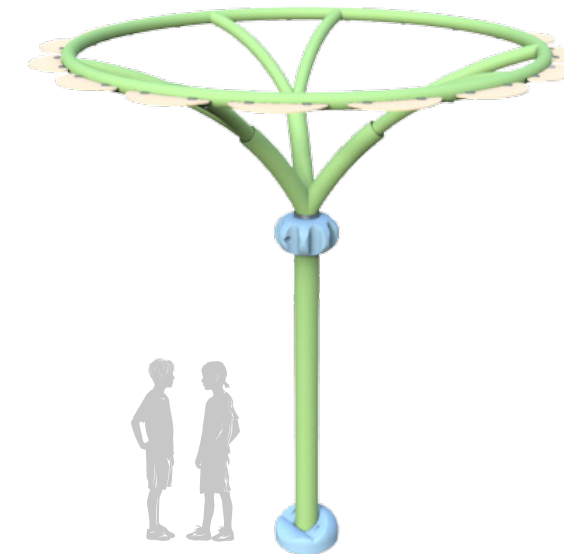
## PORTAL

Flow Rate 5 m<sup>3</sup>/h Pressure 0,7 bar



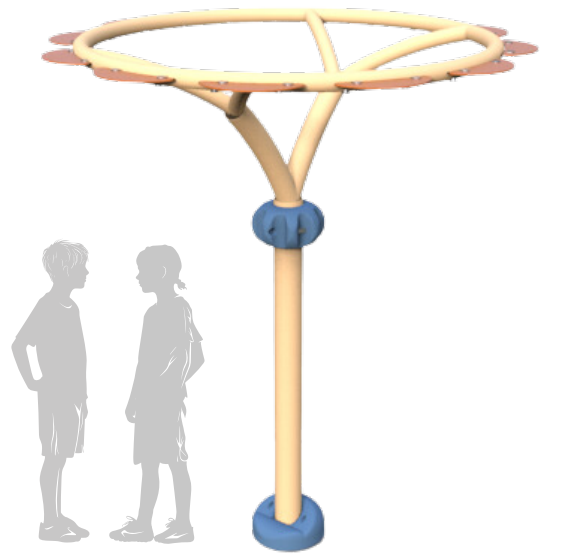
## LOOPIE

Flow Rate 4 m<sup>3</sup>/h Pressure 0,5 bar



## SAVANNY-01

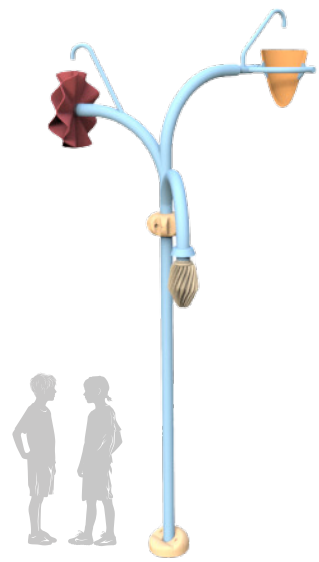
Flow Rate 12 m<sup>3</sup>/h Pressure 0,7 bar



## SAVANNY-02

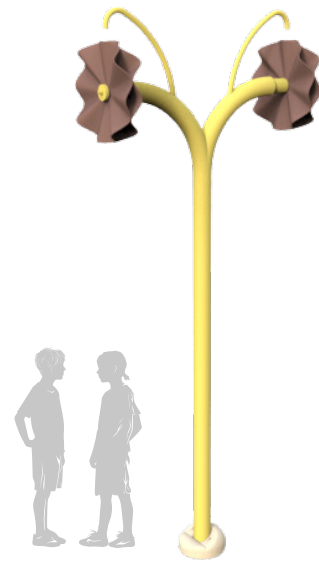
Flow Rate 10 m<sup>3</sup>/h Pressure 0,7 bar





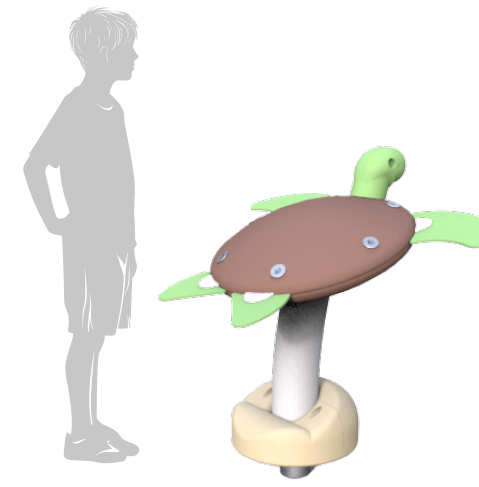
## TRIO

💧 Flow Rate 10 m<sup>3</sup>/h    🚰 Pressure 0,7 bar



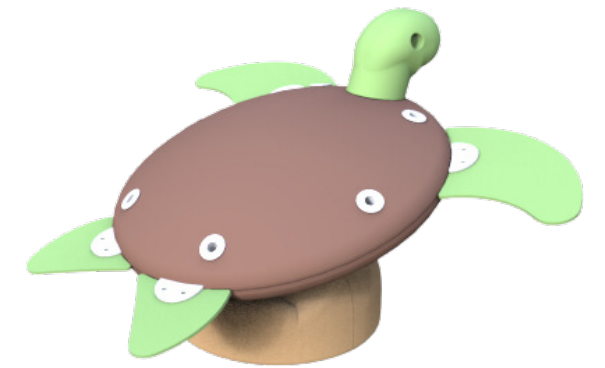
## FIRFIR

💧 Flow Rate 7 m<sup>3</sup>/h    🚰 Pressure 0,7 bar



## TURTY

💧 Flow Rate 9 m<sup>3</sup>/h    🚰 Pressure 0,7 bar



## SMALL TURTY

💧 Flow Rate 9 m<sup>3</sup>/h    🚰 Pressure 0,7 bar



## FLUFFY

💧 Flow Rate 7 m<sup>3</sup>/h    🚰 Pressure 0,7 bar



## MINI TURTY

💧 Flow Rate 9 m<sup>3</sup>/h    🚰 Pressure 0,7 bar



# Advanced Production Technologies

## Color Chart



### NeoShine

Slides produced using the RTM (Resin Transfer Molding) technique offer high gloss, smoothness, and UV resistance on both the interior and exterior surfaces. It provides the highest level of surface quality and structural durability. NeoShine is not only more aesthetic and comfortable for users but also requires less maintenance for park operators.

### NeoTexture

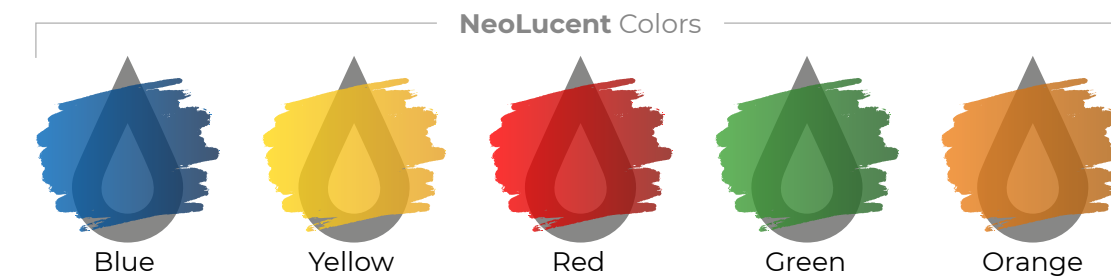
Offers unlimited pattern customization, with a specially designed surface texture that leaves a sense of depth and aesthetic impression on the slides, making your park unique. These textures give the slides a natural feel that harmonizes with the atmosphere of your park, while also making them visually more captivating.

### NeoLucent

Developed with a special high-translucency body material, NeoLucent brings both visual lightness and natural brightness to water slides. It creates a slide experience that glows with daylight, offering riders an open-air sensation while giving park visitors the pleasure of watching the action from the outside.

### NeoLight

Naturally channels sunlight into the slide through its special light-transmitting panels. Vibrant patterns and playful light effects make every ride unique, adding a magical atmosphere to the fun while elevating the user experience to the next level.





# AQUALINE

WATERPARKS & TECHNOLOGY



**Aqualine Waterparks & Technology**  
İnönü Mahallesi, Gebze Plastikçiler OSB, 2. Cd.  
No:4, 41400, Gebze/Kocaeli - Türkiye  
+90 532 640 89 84  
[www.aqualine.tr](http://www.aqualine.tr)